

Product Specifications

Dimensions (L X W XH)	172 X 36 X 51 mm
Weight	200 g
Display	0.96 inch OLED

Technical Specifications

Delivery type	Subcutaneous and Intravenous
Infusion modes	Rate mode and Volume duration mode
Syringe size	5, 10, 20 and 50 ml
Flow rate range	0.1 to 600 ml/hr (Intravenous), 0.1 to 100 ml/hr (Subcutaneous)
Priming	Manual priming
Bolus	50 to 600 ml/hr
Accuracy	+/- 2%

Battery Specifications

Battery type	Rechargeable 9V Li-ion battery
Battery life	Upto 40 hours

Others

Accessories	Standard : Pouch, straps and charger Optional : Lock box, pole clamp
Ingress Protection	IPX2
Alarms	Pump idle, System error, Unit malfunction, Syringe empty, Syringe near empty, Syringe disengaged, Battery depleted, Battery low, Occlusion, Priming volume reached limit, Bolus volume reached limit, Infusion near end, Infusion completed
Warranty	2 years from the date of shipment



Accuflow<sup>®</sup> Compact Pump

Enhancing patient care through precise infusion



Improved infusion accuracy



User intuitive controls



40 hours battery backup



Compact and portable

vTitan Corporation Private Limited

New Woodlands Building, Estancia IT Park,  
Plot No. 140,151 Vallancheri Village,  
Chengalpattu District,  
Tamil Nadu – 603202, India.  
Toll Free Number: 18005721664

[www.vtitan.com](http://www.vtitan.com)  
[sales@vtitan.com](mailto:sales@vtitan.com)  
©2026 vTitan Corporation Pvt. Ltd.  
981-1022 Rev 02

# Smart Infusion for Diverse Therapies

Accuflow Compact Pump is engineered for diverse clinical and home care settings. Its flexibility and precision make it ideal for delivering a wide range of therapies, including:



## Immunoglobulin Therapy (IVIg/SCIg)

Provides stable administration of immunoglobulins for patients with immune deficiencies or autoimmune conditions.



## Palliative Care

Ensures consistent symptom control and enhances quality of life for patients requiring long-term or end-of-life care.



## Pain Management

Delivers continuous or bolus doses for effective pain relief in palliative, post-operative, or chronic care settings.



## IV Antibiotic Therapy

Facilitates outpatient parenteral antimicrobial therapy (OPAT), allowing home-based infection management.



## Chemotherapy

Supports controlled infusion, ensuring patient safety and accurate drug delivery in oncology treatments.



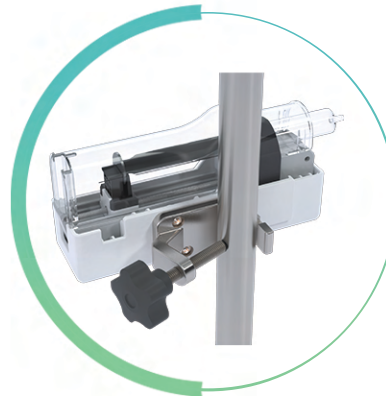
## Home & Ambulatory Care

Lightweight and easy to use, making it suitable for mobile patients or home-based therapy without constant supervision.



Designed for home care settings, the pouch can be comfortably worn around the waist, allowing patients to carry on day-to-day activities without interruption.

Lock box to ensure safe and controlled medication delivery in clinical and home care environments.



Designed for hospital and clinical settings, the pump holder ensures stable pump positioning and includes a pole clamp for easy attachment to standard medical poles.